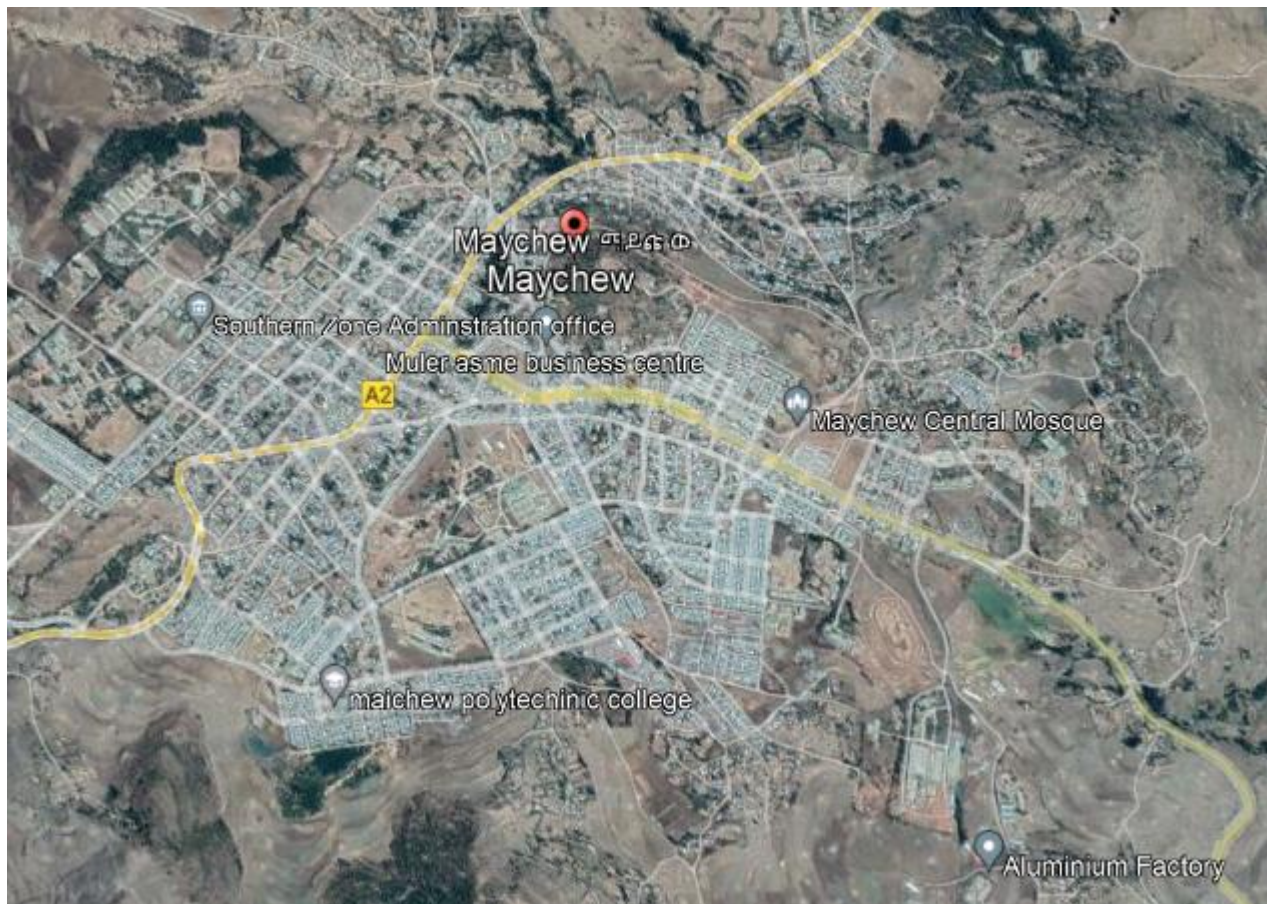


RRF Grant Number	RRFE0130
Implementing Partner (IP)	New Millennium Women Empowerment Organization
IP Team Leader	Fitsum Gebrezgabiher
Site Location Name [Kebeles]	Maichew Town
Woredas, Zones, Regions	Region: Tigray Zone: Southern, Maichewu Town
RRF Staff Member	Fitsum Beyene, Meseret Damte, Oumer Belay
Dates of Monitoring Visit	February 6-11,2023
Start and End Date of Project	January 1-March 30,2023

1. Introduction



NMWEO and IOM/RRF have an agreement for a three-month project, from January 1 to March 30, 2023, titled "rehabilitation of conflict-affected Households through provision of emergency NFI kits in Maichewu Town, Southern Zone of Tigray Region," which will help 1000HH with NFI response. To oversee the project's execution progress, NMWEO opened a satellite office in Maichew town. The majority of IDPs are based at schools and health centers, hence the project sites are within the town of Maichew. The monitoring visit's goals were to evaluate the project's progress, offer the NMWEO project team technical support, and assist in finding solutions to any problems preventing implementation and give feedback.

2. Visit Schedule

Date	Locations Visited	Overnight Location
6/02/2023	Fly from Addis to Kombolcha and travel to Woldiya	Woldiya
7/02/2023	Discussion with the NMWEO team and observe the distribution site in	Maichew
8/02/2023	Discussion with the zonal social affairs office head and with the zonal administration	Maichew
9/02/2023	Provide feedback to the partner and travel back to Woldiya	Woldiya
10/02/2023	Travel from Woldiya to Kombolcha	Kombolcha
11/02/2023	Fly back to Addis Ababa	Addis Ababa

3. Implementation of Proposed Activities

NMWEO has been doing the planned project activities, remarkable results achieved so far to meeting the objectives set in the proposal. Below are the activities carried out by the partner and results obtained:

1. Conduct introductory meetings to share clear communication about the selection criteria and ensure that all stakeholders understand the process. NMWEO conducted this activity in the presence of zonal and woreda representatives and representatives of the affected communities (both IDPs and host communities). Groups with specific need (vulnerable groups) were provided a priority. As usual, the meeting took place before listing any potential beneficiaries, transporting of items, and providing assistant to the specific kebele.
2. The establishment of committees completed, and beneficiary identification and registration took place. The relevant parties from woreda DRMO, kebele officials and committee worked as a team, with NMWEO, to do the registration. An independent verification carried out by the partner, NMWEO and complaints and feedback mechanisms were considered in the selection process.
3. Delivery of the NFIs to the project location: All NFI items were delivered to the project location per the plan on the proposal
4. NMWEO completed the distribution of the NFIs to the targeted beneficiaries from the four woredas at Maichew town. Distribution of NFI Kits for 1000 households. As observed during the monitoring visit, during the distribution of NFI NMWEO provided COVID-19 awareness to all beneficiaries. The distribution of 1000 NFI kits were done for all households.

The partner has completed the activities as per the report they have been sharing on weekly bases and the planned targets are achieved as planned. The distribution of NFI kits contributed remarkably to addressing the immediate need of the targeted beneficiaries. The government sectors and beneficiaries were comparing the quantities and the qualities of items distributed by other NGOs for other beneficiaries, and hence confirmed that the items provided by NMWEO are of the required quality and the kit composition are also wholistic for them to use. To mitigate the potential conflict between recipients and non-recipients, some highly needy beneficiary host communities incorporated, as they are hosting significant number of displaced relatives.

4. Coordination

To prevent duplication, NMWEO on project implementation coordinates with local coordination unit set up at zonal and woreda level. Every two weeks, zonal and woreda levels hold a coordination meeting with partners. The woreda and zonal social affair office are in charge of coordinating. Additionally, NMWEO is present at the

regional and national coordination meetings held in Mekele and Addis Abeba. The RRF team encouraged NMWEO to consult with and deliver a monthly report for the National cluster via report hub.



Fig 1.Meeting with woreda and zonal cluster leaders @ Maichew town

5. Implementation of Monitoring and Evaluation Strategy

The NMWEO has a Monitoring and Evaluation Focal Point at the Regional Level who oversees monitoring the progress of activities and assessing the applicability and impact of the response. NMWEO's internal data collecting technologies are used for primary data gathering, and from the information gathered, weekly reports are produced and shared with the RRF. The project site has been visited once by the national Monitoring and Evaluation Focal Point to monitor the progress of the activities.

6. Progress Towards Exit / Transition Strategy

To establish confidence between NMWEO, the government, and the beneficiaries, NMWEO already briefed the beneficiaries and concerned government offices through community meetings about the duration of the project and target recipients. A combined project implementation method was also implemented by NMWEO. As a result, there will be a smooth exit thanks to the engagement, openness, and accountability to the beneficiaries.

7. Staffing Levels [Proposed and Actual]

All personnel offered during the project duration were employed by NMWEO. All project staff members received training from NMWEO in the areas of PSEA, humanitarian principles, and accountability to affected individuals. Additionally, project team members agreed to abide by the organizations' code of conduct.

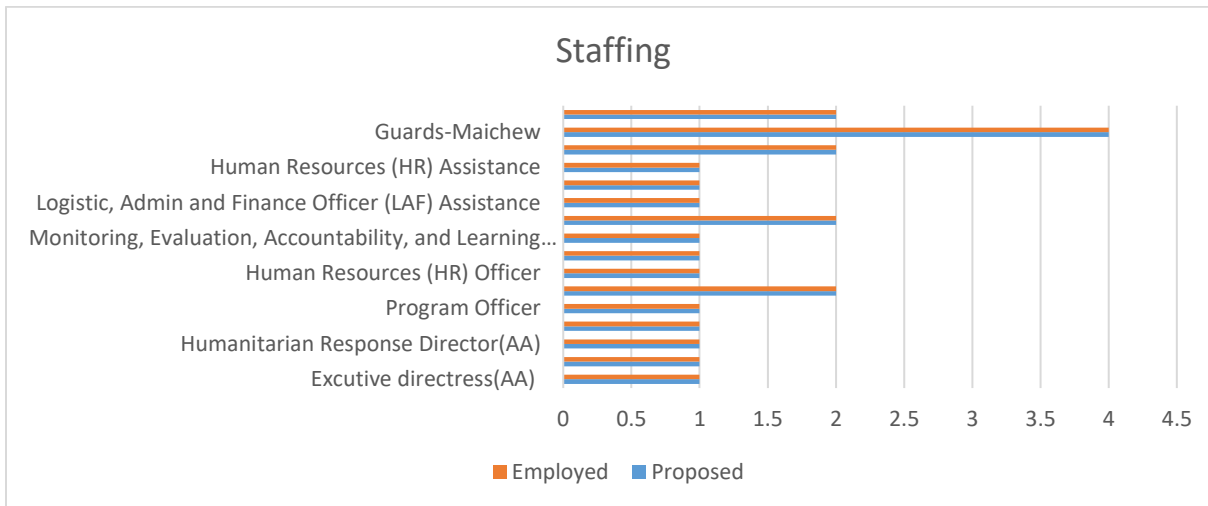


Table: Employed vs proposed

8. Accountability to Affected Populations

During the monitoring visit, we have interviewed different groups of our beneficiaries, including elderly women’s, women headed households and people with disabilities as well. The HO monitoring team conducted the interview with the beneficiaries. The volunteers working in NMWEO were supporting in the packing and transportation of the items to the elderly people and people with disabilities.

NMWEO put in place and adopted the following measures to ensure accountability to the affected people:

- Established feedback and compliant committee which has three members at each IDP sites and focal person also assigned to receive compliant.
- NMWEO provided training for project staff on PSEA, data protection protocol and each of the project staffs also signed a code of conduct prepared by the organization to make them accountable for their decision and actions.
- Prioritization was given for the most vulnerable group during beneficiaries selection based on the set selection criteria .RRF team also conducted house to house visit at IDP site to cross check the inclusion of the most vulnerable groups during registration .As per the discussion finding priority was given for the most vulnerable communities groups like elderly, person with disabilities ,unaccompanied and separated children, person with serious health conditions, women headed HH etc during beneficiaries selection, necessary preparation was also finalized at each IDP sites to provide the necessary support for most vulnerable groups during distribution. Apart from this, as per the verification carried out, they have found some beneficiaries from Korem woreda to be ineligible for the assistance and made replacement by eligible beneficiaries.

9. Means of Verification Reviewed

During our supportive monitoring mission to the project implementation area, we managed to monitor the distributions being on process. We have reviewed the beneficiary’s distribution documents and the verified beneficiaries list as well. The coordinates of the warehouse at Maichew town, where the distribution was being are located N: 12^o 47' 23.01¹¹ and E: 39^o 32' 55.90¹¹



Picture 3: Arrangement of items in the warehouse, kitted for distribution.

10. Achievement

The below activities were achieved by NMWEO.

- Conduct introductory meetings with all concerned bodies to share clear communication about the selection criteria and ensure that all stakeholders understand the process.
- Beneficiary identification and the beneficiaries were reached with the required items supplied by IOM and distributed by NMWEO.
- Beneficiaries targeting, registration and verification completed. All the concerned stakeholders participated in the: The registration process started at each IDP site creating awareness on prioritization criteria and establishing compliant and selection committee at each IDP site.
- As per the discussion with the local authorities, it is confirmed that NMWEO has good communication with the local authorities and the community.
- NMWEO and IOM were thanked for the quality and timely response they provided by the local authorities.
- Regular attendance at the regional shelter coordination cluster.
- Staff recruitment and warehouse renting completed.
- Received the items sent from IOM and stored the items in a well-organized warehouse.
- IOM and NMWEO were given a recognition for the quantities of items and quality of the materials supplied. The recognition was overt during our discussion with government and beneficiaries.
- Distribution of full kits of NFIs completed for 1000 IDP HHs displaced from Tigray, Oromia and Benishangul Gumuz regions.

11. Gaps and Challenges

- The security situation of the area still volatile and the IDPs will not back to their original village very soon
- Transportation of items from the center to Tigray is still has some challenges,

- There is huge gap between the need and the response. High level of need for SNFIs and other food items. Few households reached as compared to the concrete need on the ground level. This could be one of the challenges in addressing the affected and displaced communities who are in need of SNFIs.
- The distance of the office location to regularly attend zonal shelter cluster coordination meetings at zonal level and submit the 5W report to the shelter cluster.

12. Recommendations

- NMWEO must advocate and look for additional funding to address the critical needs of the displaced people.
- The partner is required and also advised to accomplish post distribution monitoring (PDM) timely , so that we will capture the achievements and key lessons to support future planning.
- Good to attend zonal shelter cluster coordination meeting using other available fundings of the partner.
- The RRF team advised NMWEO to establish satellite office at Maichew for further coordination efforts.
- The teams also advised IP to consult with the national and sub national cluster for consistent and timely 5W reporting.

13. Conclusions

RRF is appreciative of the remarkable progress made by the NMWEO Team in helping the region's most needy populations affected by conflict. NMWEO Teams' effort and perseverance to completing the NFI distribution are much appreciated, despite the target areas' unstable security situation. In order to prevent any potential overlap and to ensure that the most vulnerable people are reached without duplicating efforts, it is also essential for NMWEO to continue working with local government office stakeholders as well as other implementing agencies; particularly with (ZOA,LWF,WV,UNHCR etc). Finally, it is expected of the NMWEO team to ensure that the weekly and monthly reports for RRF and cluster are submitted on time. You can reach out to us if you have questions or enquiries by our email address rfethiopia@iom.int.

Annex 1 - Photos



Fig. Information disseminating banners at public place



Fig. Community volunteers arranging NFI before distribution.



Fig. Community volunteers assisting IDPs at distribution sites(left), women using donkey back for taking the NFIs home(middle), IOM/RRF staff helping a women pack her NFIs (right)